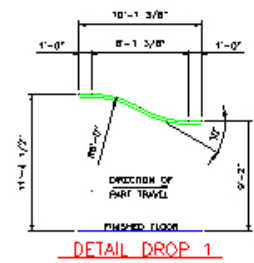
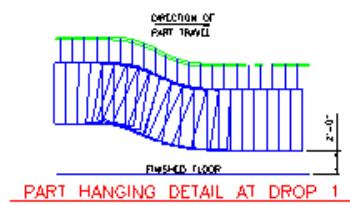


REV.	DESCRIPTION OF CHANGE	DATE	BY	CHKD
A	RELEASED TO CUSTOMER FOR APPROVAL	12/1	LOH	LOH
B	RELOCATED OVEN & WASHER IN BLDG; RELOCATED OVEN CONTROL PNL	12/06/02	LOH	LOH



LEGEND:

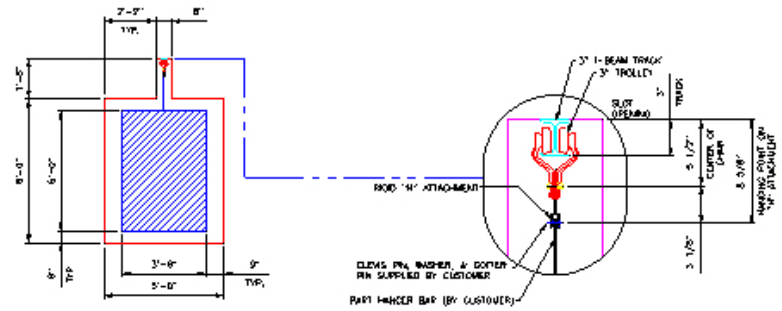
- ▽1 ELECTRICITY: 240VAC/3ø/60Hz/200 AMPS (PLC TOUCH SCREEN)
- ▽2 ELECTRICITY: 240VAC/3ø/60Hz/150 AMPS
- △ ELECTRICITY: 120VAC/1ø/60Hz/20 AMP CIRCUIT
- ⊕1 NATURAL GAS: 4,000 CFH @ 5 PSI (2" GAS TRAIN)
- ⊕2 NATURAL GAS: 950 CFH @ 5 PSI (1 1/2" DIA. GAS TRAIN)
- ⊕3 NATURAL GAS: 2,000 CFH @ 5 PSI (1 1/2" DIA. GAS TRAIN)
- ⊕ WATER 40 PSI (1 1/4" DIA. HEADER ON WASHER)
- ⊕ DRAIN

NOTES:

- 1 CONVEYOR SPECIFICATIONS:
 - A. MANUFACTURER: T.B.D.
 - B. TRACK TYPE: 3" I-BEAM
 - C. ATTACHMENT TYPE: STANDARD "H" ON 12" CENTERS
 - D. CONVEYOR SPEED: 4 FPM
 - E. CONVEYOR LENGTH: 193' SUPPLIED BY SBS (SEE NOTE 6)
2. PART SPECIFICATIONS:
 - A. DESCRIPTION: LAWN CARE EQUIPMENT
 - B. MAXIMUM SIZE: 42"W X 60"H X 48"L
 - C. MAXIMUM WEIGHT: 140 LBS.
 - D. COATING TYPE: POWDER
3. UTILITY REQUIREMENTS:
 - A. NATURAL GAS:
 - 1) VOLUME: 6,950 TOTAL CFH @ 5 PSI
 - 2) INSURANCE CARRIER: FM
 - B. ELECTRICITY: 240VAC/3ø/60Hz ▲
 - C. WATER @ 40 PSI
4. SEE SHT. #5002 FOR COMPLETE PART HANGING DETAILS
5. SEE SHT. #5003 FOR REQUIRED BUILDING STEEL MODIFICATIONS
6. CUSTOMER TO CONNECT SBS CONVEYOR TO EXISTING CONVEYOR

STAGE	PROCESS	TIME	TEMP
1	AUX. CLEAN	90 SECS.	150° F
2	RINSE	45 SECS.	AMB
3	SEAL	30 SECS.	AMB.

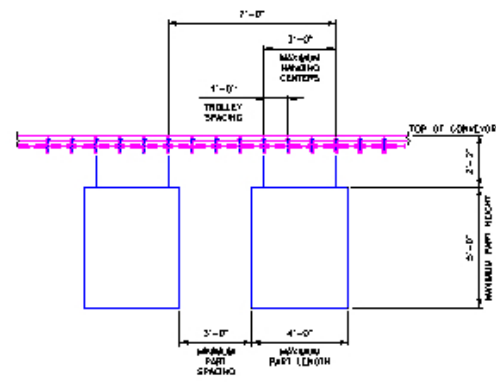
OVEN DATA	CURE OVEN	DRY OVEN	CONVEYOR
OPERATING TEMP.	500°/450°	450°/500°	TYPE 3' 1
TIME PER ZONE	20 MIN	5.0MIN	FPM: 4 NON.
CIRC FAN VOLUME	46,800CFM	N/A	CFM C/F: 38"
EXHAUST FAN VOL.	2,948CFM	N/A	CFM LBS/HR: 3,000
AIR SEAL FAN(S)	4,500CFM	4,500CFM	LBS/HANGER: 75
BURNER RATING	4.0 MIL BTU	N/A	BTU
BTU/HR PED'D	2.8 MIL BTU/HR	N/A	BTU/HR



SILHOUETTE CONFIGURATION

PART HANGING CONFIGURATION

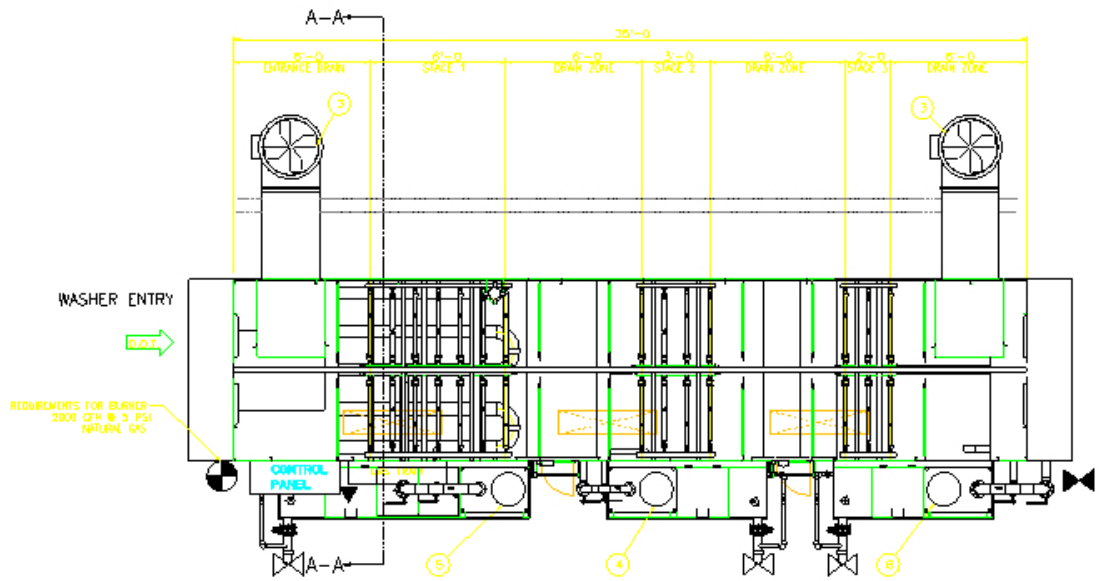
SCALE: 6X



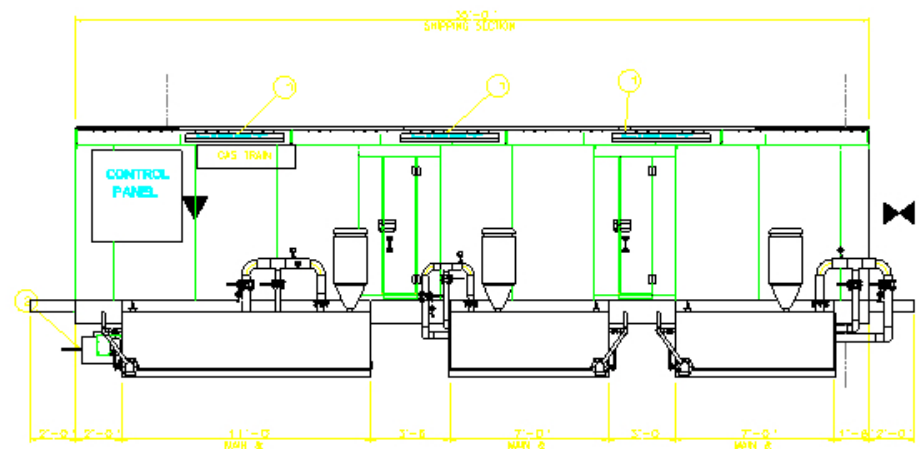
PART SPACING DETAIL

- NOTES:**
- CONVEYOR SPECIFICATIONS
 - A. MANUFACTURER: T.B.O.
 - B. TRACK TYPE: 3" I-BEAM
 - C. ATTACHMENT TYPE:
 - 1) 3" TROLLEY WITH RIGID "H" ATTACHMENT ON 12" CENTERS
 - D. CONVEYOR SPEED: 4 FPM
 - PART SPECIFICATIONS
 - A. DESCRIPTION: LAWN CARE EQUIPMENT
 - B. MAX PART SIZE: 42"W X 60"H X 48"L
 - C. MAX PART WEIGHT: 140 LBS
 - D. COATING TYPE: POWDER

REV.	DESCRIPTION OF CHANGE	DATE/APPD.	DATE
A	RELEASED FOR CUSTOMER APPROVAL		11/26/02
B	REVISED PLENUM		12/16/02



PLAN VIEW



ELEVATION VIEW
SCALE 1/32

WASHER DATA	STAGE 1	STAGE 2	STAGE 3
PROCESS	ALY CLEAN	RINSE	SEAL
DURATION	60	45	30
OP. TEMP	150	AMBIENT	AMBIENT
NOZZLE TYPE	FLAT V	FLAT V	FLAT V
NOZZLE MODEL	UMI-8550	UMI-8550	UMI-8550
PROCESS RISERS	SCH. 80 CPVC	SCH. 80 CPVC	SCH. 80 CPVC
WGT NOZZLE MODEL	NA	NA	NA
WGTING RISERS	NA	NA	NA
PUMP MODEL	3/4X10SE 15HP	2.5X3/10SE 5HP	CL4X10SE 7.5HP
PUMP TTL CFM	303.0	193.6	100.2
PUMP TOR	65	20	55
BURNER	6"	-	-
BTU/Hr OUTPUT	2000000	0	0
TANK GALLONS	1288	916	916
MATERIALS/WASHER			
TANKS	1/4" M/S	1/4" M/S	1/4" M/S
DRIVE	1/4" M/S	1/4" M/S	-
DRINK BOARDS			
	10 GA. 304L	10 GA. 304L	-
	END. BAND PLY - 1/4" M/S	END. DRINK BOARD - 10 GA. 304L	END. DRINK BOARD - 10 GA. 304L
	EXIT BAND PLY - 1/4" M/S	EXIT DRINK BOARD - 10 GA. 304L	
HOOD			
	14 GA. 304L 5/S	14 GA. 304L 5/S	14 GA. 304L 5/S
PUMP MIL			
	MILD STEEL	MILD STEEL	MILD STEEL
FILTER SCREENS			
	5/S	5/S	5/S
TANK ACCESS LIDS			
	14 GA. 5/S	14 GA. 5/S	14 GA. 5/S
WALKWAY			
	FIBERGLASS	FIBERGLASS	FIBERGLASS

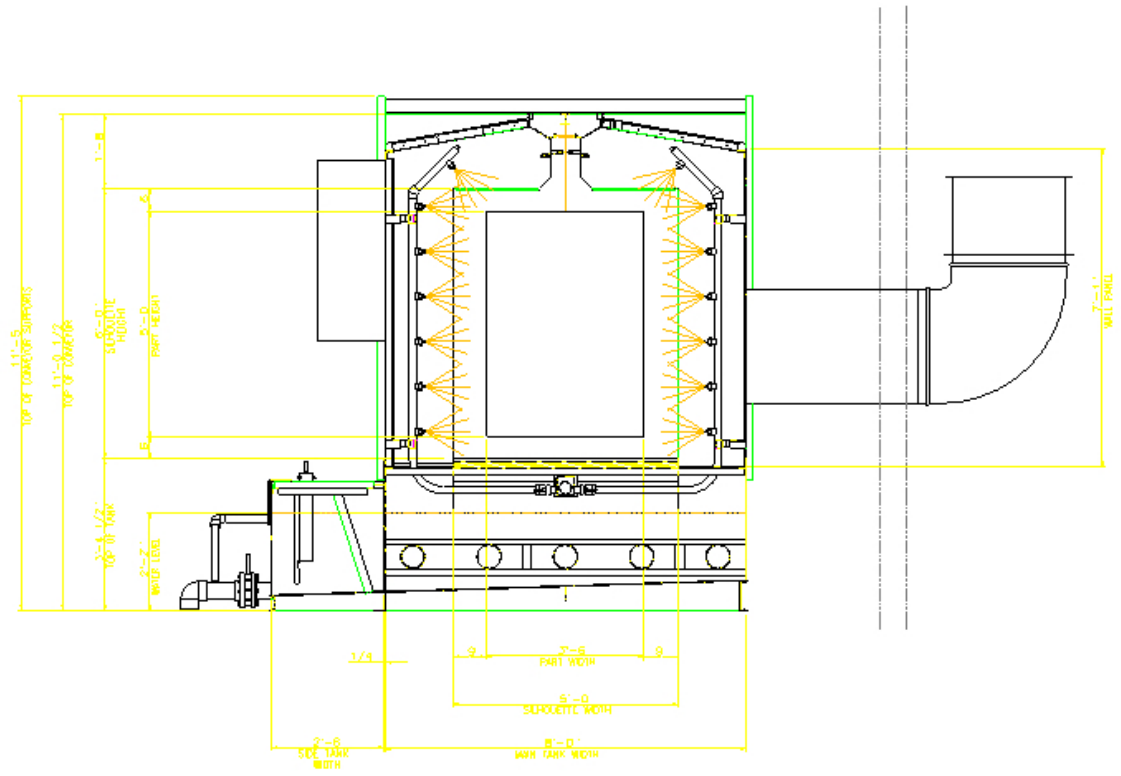
LEGEND:

- 1. NATURAL GAS - 2000GPM @ 5 PSI
- 2. ELECTRIC POWER - 240/3Ø/50 Hz
LIGHTS - 120 VOLTS / 1Ø/ 60 Hz
- 3. WATER SUPPLY - 30-40 PSI
- 4. DRAIN - 4"

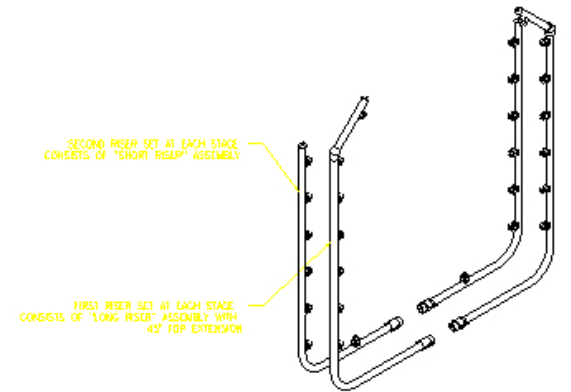
GENERAL NOTES:

1. DESIGN LINE SPEED - 4 F.P.M.
2. PRODUCT - ALUM. CASE COMPONENT
MAX PART SIZE - 42" x 60" x 48" L
MAX PART WEIGHT - 14 LBS
3. UTILITIES - GAS, NATURAL GAS @ 5 PSI
INSTRUMENT, IN
ELECTRICAL: 240/3Ø/50 Hz
LIGHTS: 120 VOLTS / 1Ø/ 60 Hz
WATER: 30-40 PSI
4. CONVEYR - 3" BEAM CONVEYR

REV	DESCRIPTION OF CHANGE	DATE/APP'D	DATE
A	RELEASED FOR CUSTOMER APPROVAL		11/26/02
B	REVISED PLENUM		12/16/02



SECTION A-A



TYPICAL RISER CONFIGURATION
SCALE: 1/16"